



# PLACES

USER GUIDE



## WHAT ARE 'PLACES'

"Places" has been designed to offer users the ability to enter name specific areas that their assets may visit, so when looking at the live map the given name of the location will be shown on the system.

This can be especially useful in remote areas where Google maps can't actually identify an address, or instead opts for the nearest address.

"Places" also offers users an extra layer of security with the ability to ringfence an area, be it a field or a property boundary and receive alerts should the vehicle breach the set boundary.

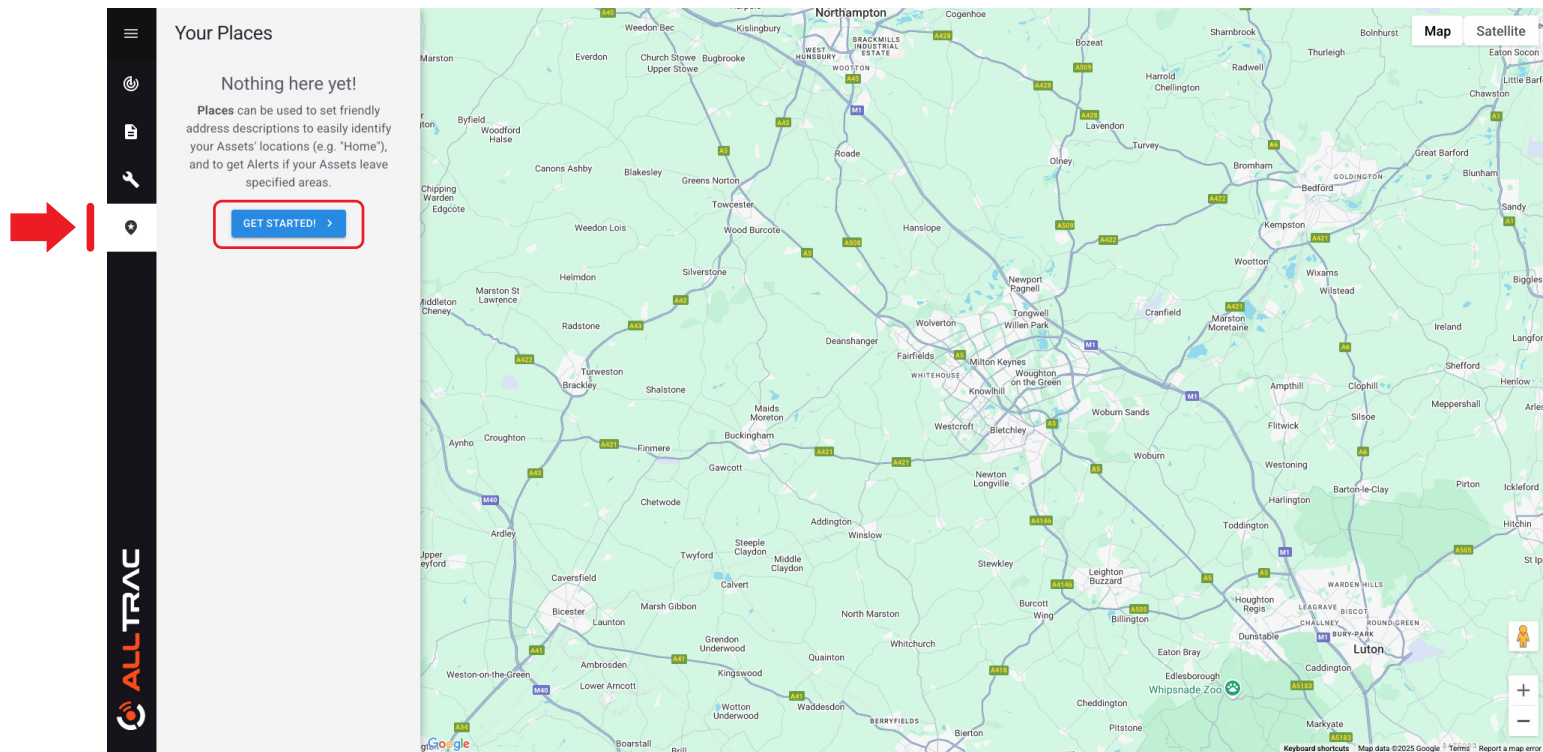
This can also be escalated to the monitoring centre should this behaviour be suspect.

**Please Note: This feature is only available for ATVTrac and MarineTrac**

## Let's start setting up your first 'Place'

First please login to your account via the web portal OR your APP  
(you may find using a PC/Mac/Laptop easier, you will see the "Places" icon).

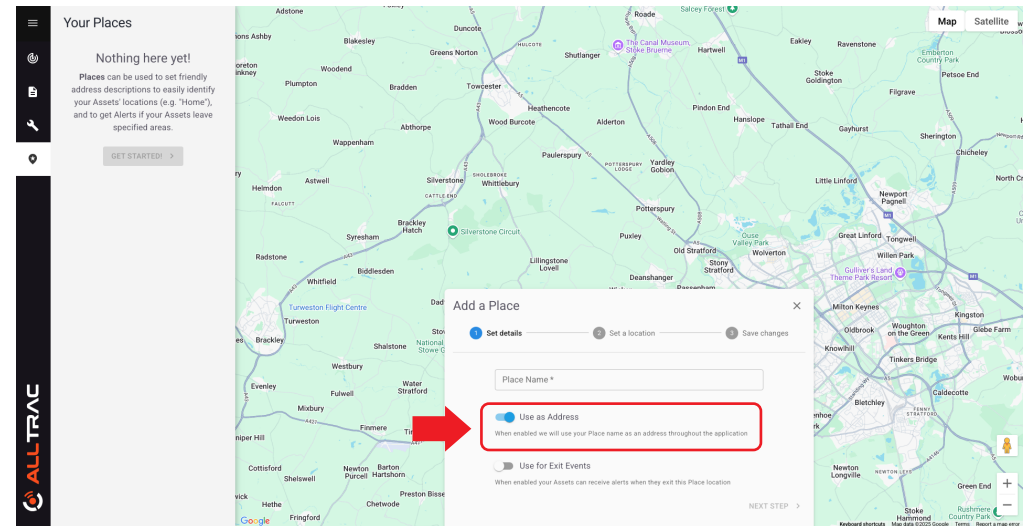
Select the 'places icon' to open the menu and then click "Get Started"



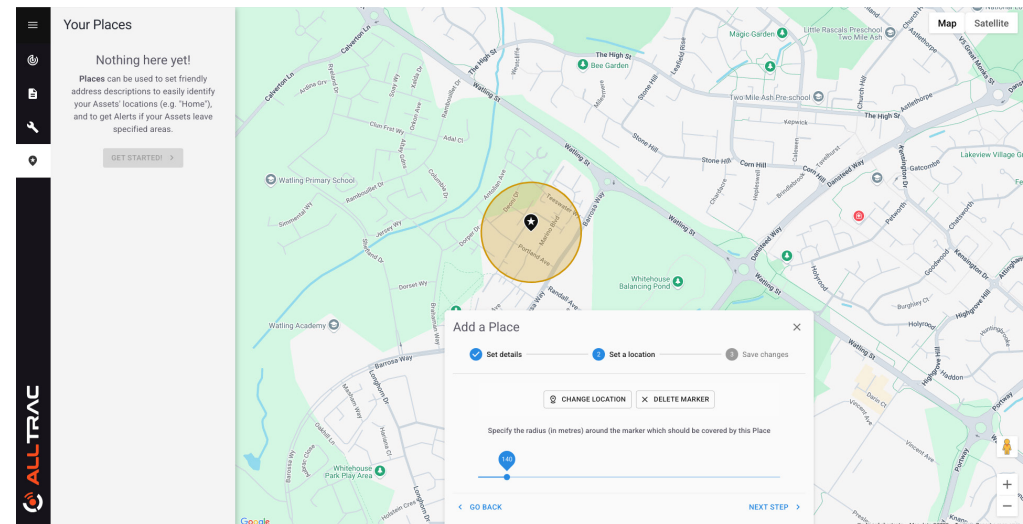
# Step One (select and name a Place)

Decide if you want to only create a name for a location or want an alert when an asset leaves a set location

- Type in place name
- Set 'Use as address' (this may be set by default)
- Choose 'Mark A point'



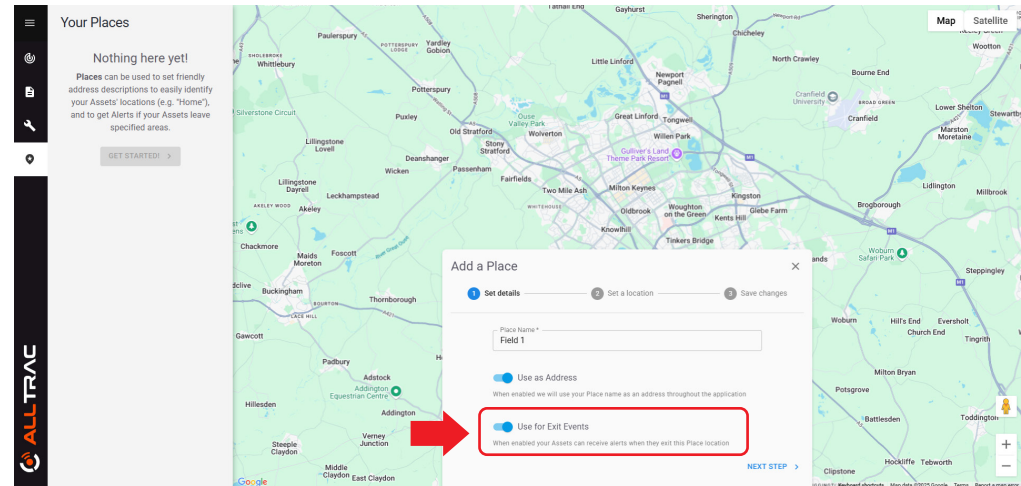
- Click on the map and place the cross hair over the centre of the area you wish to name
- Adjust the radius to suit
- Click next, now should an asset park up or enter the circle you have just created it will show the location name you have given



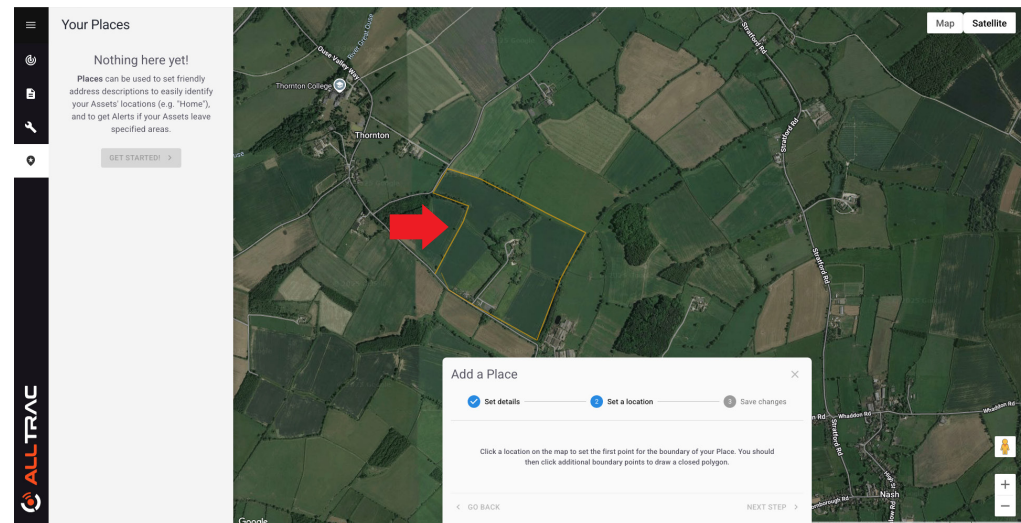
## Step Two (create alerts on exit of a perimeter/area)

If you want to receive alerts should your asset breach a set boundary this feature can be selected using 'Exit Events'

- Type in place name (you can also add the name as 'use as address' by clicking 'Use as Address')
- Click on 'Use for Exit Events' (blue is active)



- Select 'Draw Custom Shape' zoom into the map to find the area you want to fence (you may find selecting the Satellite tab to top right will help identify the area better)
- Click on the map where you want to start the fence and then move the cursor around the map, click at the various boundaries to come back to the starting point. It will then indicate 'Shape Valid' click next and the perimeter is set, so any assets that leave that perimeter driven or on a trailer will set of an alert

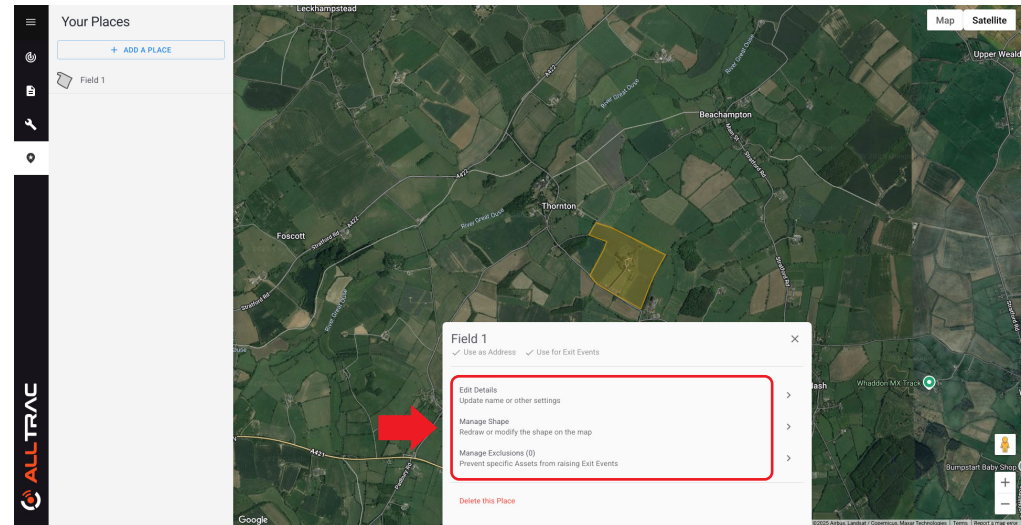




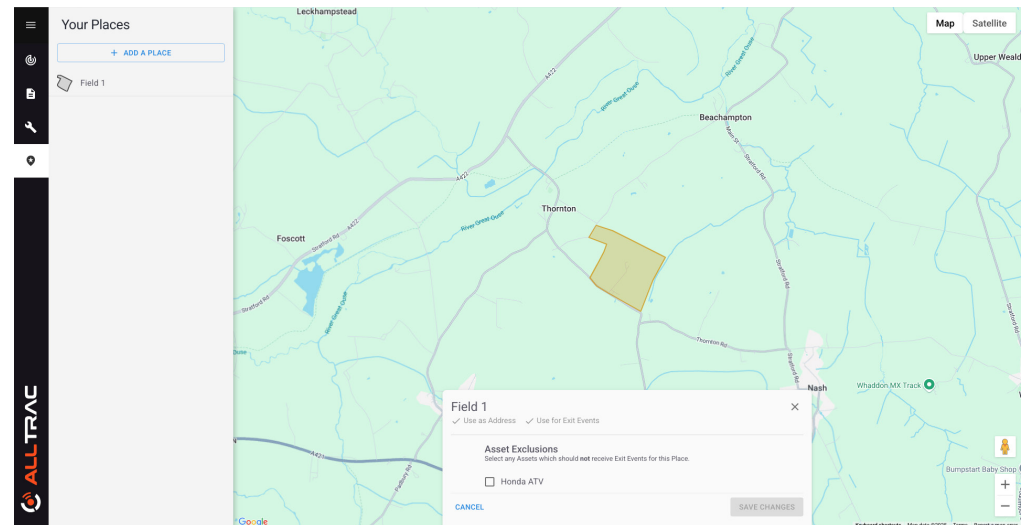
# How to edit existing places

If you need to change a name, shape or the assets associated with that boundary alert area

- Click on the place's icon and click on the place you wish to edit
- You will be presented with a choice of the three elements that can be changed



- Including the ability to change which assets you want to be included with the exit alerts. This allows you to differentiate different assets against different locations



## Quick summery of the two functions

### Use as Address

If in use, the place name you have selected will appear in journey history

### Use for Exit Events

This will alert you via text, email & phone call. All these can be turned ON and OFF from alerts

An exit alert will send you a notification when the asset leaves the location. A location can be any size, for example an entire estate (Min area 1KM<sup>2</sup> to 40KM<sup>2</sup> (10000 acres) Should your asset leave the designated boundary / harbour you will be alerted if an alert is set

### Contact us

If you need any further help, please don't hesitate to contact us we would be happy to help

Email: [hello@alltrac.co.uk](mailto:hello@alltrac.co.uk) | Phone: +44 (0) 1327 317 980 Lines open Monday - Friday, 9am - 5:30pm

**Please Note: This feature is only available for ATVTrac and MarineTrac**